

Einstein Retracts

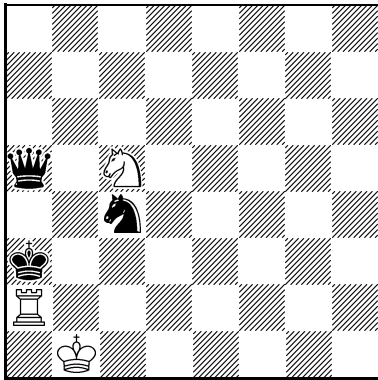
Eric Huber, Vlaicu Crisan, Andreas Thoma

Don't worry, Einstein does not retract his theory of relativity, the speed of light is still the same in every initial system. The title of this article refers to Einstein chess.

Are you as clever as Einstein had been and are you able to solve the simple one-movers-retractors with the condition *Einstein chess*?

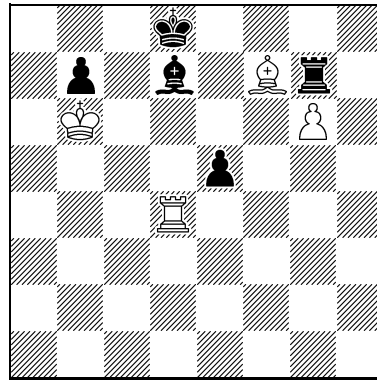
In *Einstein chess* a piece (exceptions are the kings) not taking another piece steps down the Einstein-ladder in the order Q-R-B-S-P-P-P ... and climbs it up taking a piece from P-S-B-R-Q-Q ... Pawns reaching the last row remain pawns and cannot move. White officers becoming pawns on the first row can make one step forward, the same for black on the last row.

1
Andreas Thoma
original 8/8/16



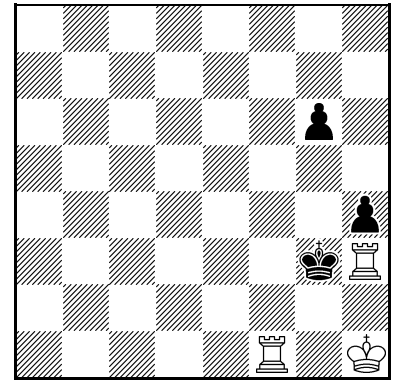
-1/#1 3+3
Einstein chess
2 solutions

2
Andreas Thoma
original 8/8/16



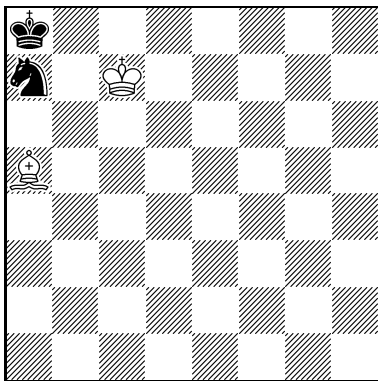
-1/#1 4+5
Einstein chess
2 solutions

3
Andreas Thoma
original 8/8/16



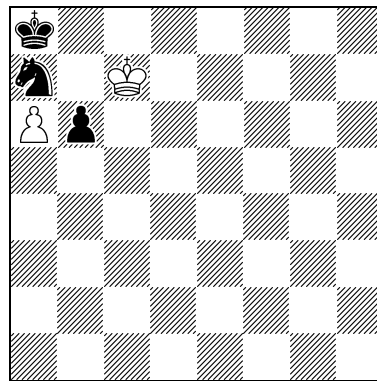
-1/#1 3+3
Einstein chess
2 solutions

4
Andreas Thoma
original 8/8/16



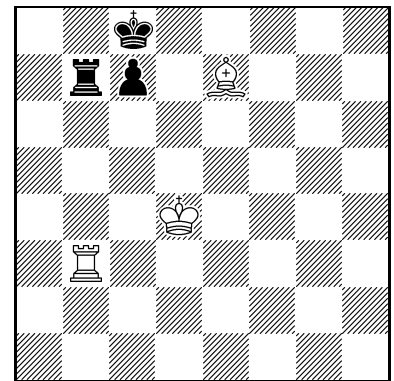
-1/#1 2+2
Einstein chess
set play

5
Vlaicu Crisan
original 8/8/16



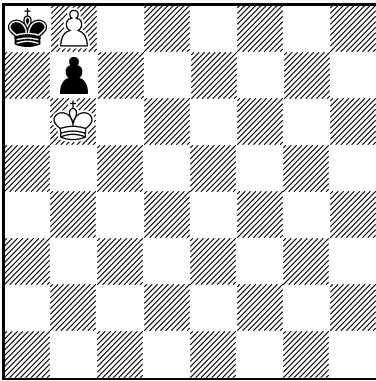
-1/#1 2+3
Einstein chess
2 solutions

6
Eric Huber
original 8/8/16



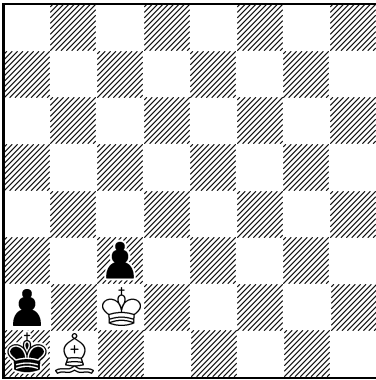
-1/#1 3+3
Einstein chess
2 solutions

7
Andreas Thoma
 original 8/8/16



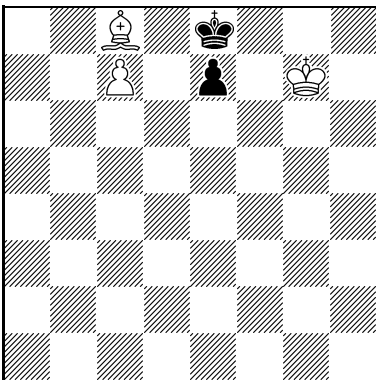
-1/=1 2+2
 Einstein chess
 2 solutions

10
Eric Huber
Vlaicu Crisan
 original 8/8/16



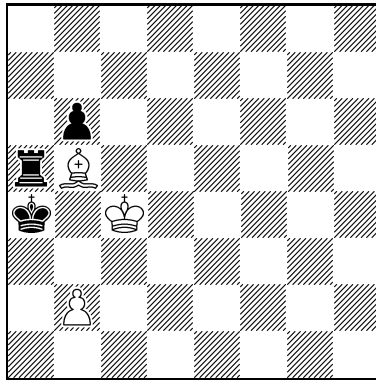
-1/#1 2+3
 Einstein chess
 2 solutions

13
Andreas Thoma
 original 8/8/16



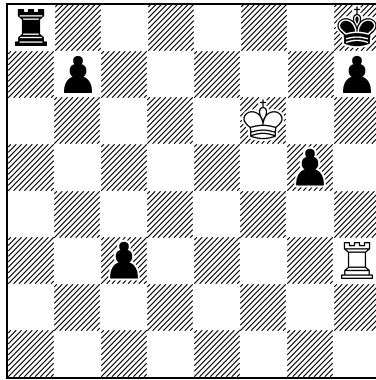
-1/=1 3+2
 Einstein chess
 2 solutions

8
Eric Huber
Vlaicu Crisan
 original 8/8/16



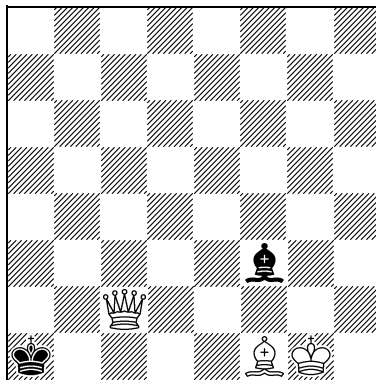
-1/#1 3+3
 Einstein chess
 2 solutions

11
Eric Huber
Vlaicu Crisan
 original 8/8/16



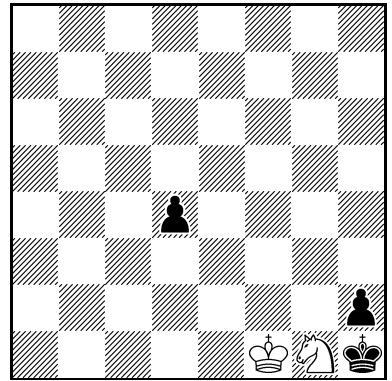
-1/#1 2+6
 Einstein chess
 2 solutions

14
Eric Huber
Vlaicu Crisan
 original 8/8/16



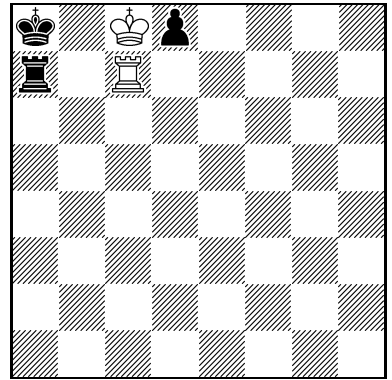
-1/#1 3+2
 Einstein chess
 2 solutions

9
Eric Huber
Vlaicu Crisan
 original 8/8/16



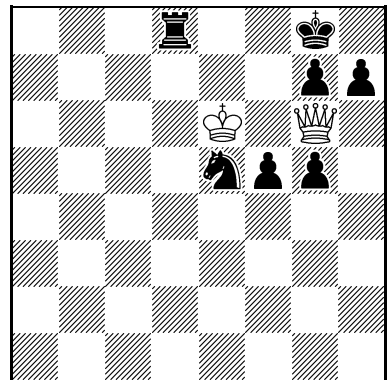
-1/#1 2+3
 Einstein chess
 2 solutions

12
Eric Huber
Vlaicu Crisan
 original 8/8/16



-1/#1 2+3
 Einstein chess
 2 solutions

15
Eric Huber
Vlaicu Crisan
Andreas Thoma
 original 8/8/16



-1/#1 2+7
 Einstein chess
 2 solutions

Solutions:

- (1) a) R 1.Qc2-a2R+ & 1.Qb3R#; b) R 1.Bb3xSa2R+ & 1.Bc2S#
- (2) a) R 1.Sd6xBf7B & 1.Rh4B#; b) R 1.Re7-f7B & 1.Rdxd7Q#
- (3) a) R 1.Bf5xPh3R+ & 1.Bxg6R#; b) 1.Qf5-h3R+ & 1.Rf2B#
- (4) Set: Bb6S#; 1.Rb5-a5B & 1.Rb7B#
- (5) a) R 1.Sc5-a6P & 1.Sb7P#; b) R 1.a5-a6 & 1.a5xb6S#
- (6) a) R 1.Sc6xBe7B & 1.Rh3B#; b) R 1.Qd5-b3R & 1.Qd8R#
- (7) a) R 1.Sa6-b8P & 1.Sc7P=; b) R 1.Sc6-b8P & 1.Sa7P=
- (8) a) R 1.Rd5-b5B & 1.Rd1B#; b) R 1.Sd4xSb5B & 1.Sb3P#
- (9) a) R 1.Bf2-g1S & 1.Bg3S#; b) R 1.Be3-g1S & 1.Bf2S#
- (10) a) R 1.Kc1-c2 & 1.Bc2S#; b) R 1.Rb3-b1B & 1.Rxc3Q#
- (11) a) R 1.Kf7-f6 & 1.Rxc3Q#; b) R 1.Kg6-f6 & 1.Rxh7Q#
- (12) a) R 1.Qb6-c7R & 1.Qb8R#; b) R 1.Ba5xSc7R & 1.Bb6S#
- (13) a) R 1.Se6-c7P & 1.Kg8=; b) R 1.c6-c7 & 1.Be6S=
- (14) a) R 1.0-0 & 1.Rh8B#; b) R 1.Rf2-f1B & 1.Qc1R#
- (15) a) R 1.Kf6-e6 & 1.Qxg7Q#; b) R 1.Qf6xPg6 & 1.Qxd8Q#

Eric Huber (Bucharest/Romania), Vlaicu Crisan (Cluj-Napoca/Romania),
Andreas Thoma (Groß Rönnau/Germany)

August 2016